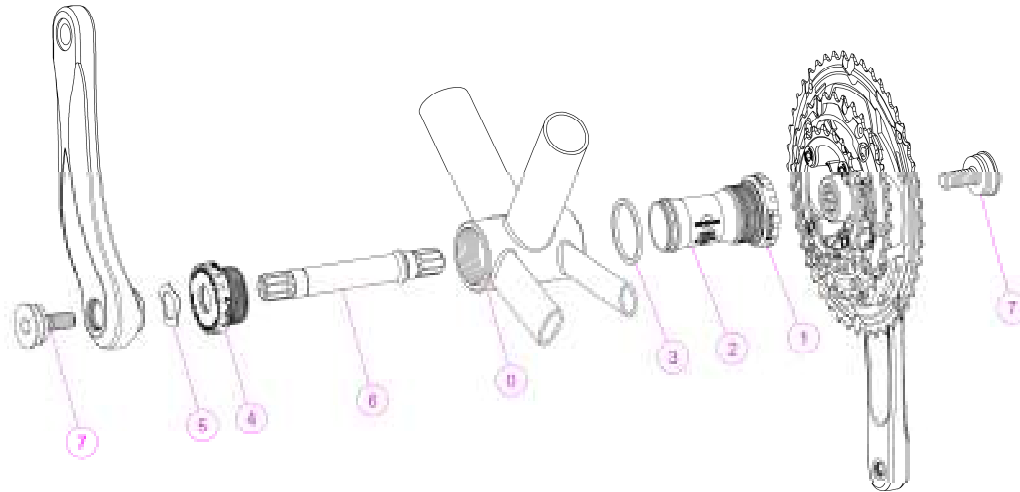




## Alpha Drive Exo/PDE Crank Service Instructions CK-715 / PDE



BB-5000 & Alpha Drive Exo/PDE Crank

- 0. BB Shell
- 1. Right BB Cup
- 2. Alloy Center Sleeve
- 3. Alloy BB Cup Spacer
- 4. Left BB Cup
- 5. Wave Spring Washer
- 6. BB Spindle
- 7. M8 Crank Bolts

### Crank Installation:

1. Ensure that Bottom Bracket (BB) shell is clean and free of metal chips, dirt and excess paint.
2. Follow assembly order pictured above. Install the R. bearing cup (1), alloy center sleeve (2), and alloy BB cup spacer (3). Tighten cup to 40-50 Nm (Use FSA MegaExo cup tool part no. E0139).
3. Install the BB spindle (6), from the left side of BB shell, ensuring the step of the spindle is in contact with the R. bearing cup inside surface.
4. Install L. bearing cup (4), tighten cup to 40-50 Nm.
5. Install Right crank arm by precisely engaging the spindle hole of crank to BB spindle. Do not damage the cover of Right BB Cup, tighten M8 Bolt (7) to 35-45 Nm.
6. Insert the Wave Spring Washer (5) to the left side of BB spindle (6) and install left crank arm. Tighten M8 Crank Bolt (7) to 35-45 Nm.

**Full Speed Ahead, USA**  
12810 NE 178th St. Suite 102  
Woodinville, WA 98072  
Tel: 1\_425\_488\_8653

**Full Speed Ahead, Europe**  
Via Del Lavoro, 56  
20040 Busnago, Milan, Italy  
Tel: +39\_039\_688\_5265

**TH INDUSTRIES / FSA Asia**  
487 Ko-Chung Rd. Ta-Li City 412  
Taichung County, Taiwan  
Tel: +886\_4\_2406\_8641



Fax: 1\_425\_489\_1089

Fax: +39\_039\_682\_3336

Fax: +886\_4\_2406\_8076