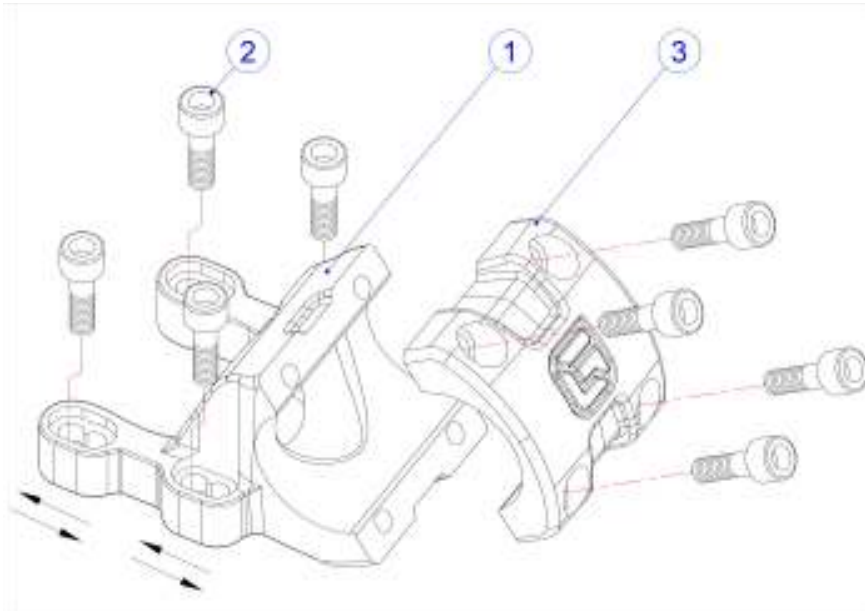


Gravity Direct Connect Stem Service Instructions



Service Instructions

Congratulations on your Full Speed Ahead Product. Please read these instructions and follow them for correct use. Since specific tools and experience are necessary for proper installation, it is recommended that the stem be installed by a qualified bicycle technician. These instructions and instructions for other FSA products are available for download at www.fullspeedahead.com

Specification

Item Number / Model Name **ST-DH-320-DC / Gravity Direct Connect Stem**

Components

Follow the assembly order in the illustration:

- ① Main Body x1
- ② M6 Fixing bolts x8
- ③ Stem Face Plate x1

Contact

If you have questions, please visit our web site contact page at:
<http://www.fullspeedahead.com/contact>

Warranty

Full Speed Ahead (FSA) warrants all FSA, Gravity, VisionTech, and RPM products to be free from defects in materials or workmanship for a period of two years after original purchase unless otherwise stated in the full warranty policy. The warranty is non-transferable and valid to the original purchaser of the product only. Full warranty policy is available at www.fullspeedahead.com

Stem Installation

1. Always use an accurately calibrated torque wrench when tightening M6 fixing bolts ②. Ensure that the fork crown is clean and free of burrs or chips.
2. Position the main body ① on front fork crown to the desired position. Stem can be adjusted to 45mm or 50mm by installing M6 fixing bolts ② in forward or aft positions as shown in the illustration.
3. Tighten the M6 Fixing Bolts ② to the fork crown with a torque of 90 kgf.cm / 9Nm / 78 in.lbs. Ensure that bolt threads have a light layer of grease.
Note: Alternately tighten the M6 fixing bolts so all bolts reach recommended torque simultaneously.
4. Install handlebar between the main body ① and stem face plate ③ and tighten the M6 fixing bolts to a torque of 90 kgf.cm / 9Nm / 78 in.lbs. Ensure that bolt threads have a light layer of grease.
Note: Gradually and evenly tighten the M6 fixing bolts in a diagonal pattern so all bolts reach recommended torque simultaneously.



Full Speed Ahead, USA
12810 NE 178th St. Suite 102
Woodinville, WA 98072
Tel: 1_425_488_8653
Fax: 1_425_489_1089

Full Speed Ahead, Europe
Via Del Lavoro, 56
20040 Busnago, Milan, Italy
Tel: +39_039_688_5265
Fax: +39_039_682_3336

TH INDUSTRIES / FSA Asia
487 Ko-Chung Rd. Ta-Li City 412
Taichung County, Taiwan
Tel: +886_4_2406_8641
Fax: +886_4_2406_8076