



# Lightning Stryke™

## Installationsanleitung



# Lightning Stryke™

## Installation Instructions

**Hinweis für Fachhändler:** Wenn Sie dieses Produkt für den Konsumenten installieren, bitte übergeben sie ihm/ihr nach der Installation diese Benutzeranleitung.

**Vielen Dank für den Kauf des Profile Design Lightning Stryke™ aerobar. Please read these instructions thoroughly before attempting to install this item. Proper installation is required for compliance with Profile Design's warranty policy. If you are not familiar with the installation of aerobars, brakes, shifters or their accessories, please seek the assistance of your local Profile Design dealer by logging on to [www.profile-design.com](http://www.profile-design.com) and using „dealer search“ or by calling Profile Design's customer service number.**

### Notwendiges Werkzeug und Material: 5mm Allen wrench, Torque wrench

- The Lightning Stryke is an aerobar with a unique stem clamping mechanism. This aerobar is designed to work with the Profile Design Lava/Lava OS and Hammer/Hammer OS stems with lengths of 90mm to 120mm. **[WARNING]** Do not install this aerobar with any other manufacturer's stems as this may cause the aerobar to slip while riding resulting in a loss of control.
- Threaded bolts have been pre-treated by Profile Design during production with a special blue thread locking compound. This special compound is easy to detect on the threads of all bolts provided. If you cannot detect this thread locking compound or if you have cleaned it off through normal maintenance, re-apply a suitable blue thread locking compound as available from Loctite® or another company before assembly.
- For installation with a new stem, please follow our installation of that product.
- Using the 5mm Allen wrench, install the top bracket (#2) and bottom bracket (#3) around the stem and tighten the M6x25 mushroom head bolts (#4) to a torque of 40-50 in-lbs (4.5-5.6 Nm). The top and bottom brackets will contact each other after tightening the bolts. Note that the top bracket should have the arm bridges arc forward – this will allow for more knee clearance while riding. The bottom bracket should have the extension clamp projecting forward – this will allow for maximum headtube clearance.
- Install the Lightning Stryke Extension (#1) into the bottom bracket clamp and adjust to desired length. Evenly tighten the M6x18 bottom bracket clamp bolts (#5) to a torque of 40-50 in-lbs (4.5-5.6 Nm)—after tightening these bolts the bracket system will be secure on the stem. There is a Nylon washer pre-installed in the bottom bracket—DO NOT REMOVE THIS WASHER. In order to get your desired length you may need to trim the carbon extension. Prior to cutting the extension shorter, please measure as accurately as possible the desired length—extensions cut too short are not covered under Profile Design's warranty. Once the cutting area is determined, place masking tape around the cutting area (taking care to clearly mark the cut line) and, using a cutting guide, cut through the aerobar extension using a medium or fine tooth (24t or 32t) hacksaw. The masking tape and medium or fine tooth hacksaw will help prevent slight splintering of the carbon fiber. **[WARNING]** Cut all the way through the extension! Do not leave a "tag" end of carbon by failing to cut through the extension. This may splinter the carbon and weaken the extension. Profile Design recommends leaving 20mm of extension exposed behind the bottom bracket clamp.
- If you wish to install bar end shifters into the tip of the extension (#1), slide control cable and housing through the holes provided in the tube. DO NOT DRILL ADDITIONAL HOLES IN THE EXTENSION BAR. Tighten the mounting bolt until lever is firmly in place. **[WARNING]** DO NOT OVER TIGHTEN MOUNTING BOLT AS THIS MAY DAMAGE THE CARBON TUBE. Do not exceed 45in-lbs (5Nm).
- To install the F-22 arm troughs in the widest position use an M6x13 flat head bolt (#12) for the outer hole of the top bracket bridge and an M6x16 (#14) flat head bolt for the middle hole of the top bracket bridge. Insert the bolts through the arm trough washer (#6), into the F-22 arm trough (#8 & 9), through the elastomer spacer (#7), and thread the bolts into the top bracket arm bridge (#2). For the narrower armrest position use two M6x16 flat head bolts per side. Using a 5mm Allen wrench, tighten each bolt to the arm bridge with a torque of 30in-lbs (3.4 Nm). Two bolts are required per side to prevent the arm troughs from spinning on the bridges. Repeat on second arm trough.
- To achieve a higher riding position, remove the M6x13 and M6x16 flat head bolts and re-install using the M6x25 (#11) and M6x28 (#13) flat head bolts respectively. Insert the bolts through the arm trough washer, into the F22 arm trough, through the holes of the riser post (#10), and thread into the arm bridges of the aerobar. Choose the bolt holes of the arm bridge to adjust the width of the arm trough for comfort. Using a 5mm Allen wrench, tighten each bolt to the arm bridge with a torque of 30in-lbs (3.4 Nm). Two bolts are required per side to prevent the arm troughs from spinning on the bridges. Repeat on second arm trough.
- Remove the Velcro backing from the F-22 arm pads (#15 & 16) and apply to each of the F-22 arm troughs. To get maximum adhesion of the Velcro backing use the broad flat section of an Allen wrench or a pen to firmly press the Velcro backing against the armrest. Apply each arm pad to the arm trough and hold firmly for 30 seconds to insure proper attachment.
- Wrap bars as desired and install end plus as required.
- Recheck the bolts for tightness after first usage and periodically thereafter to insure secure attachment of the aerobar.

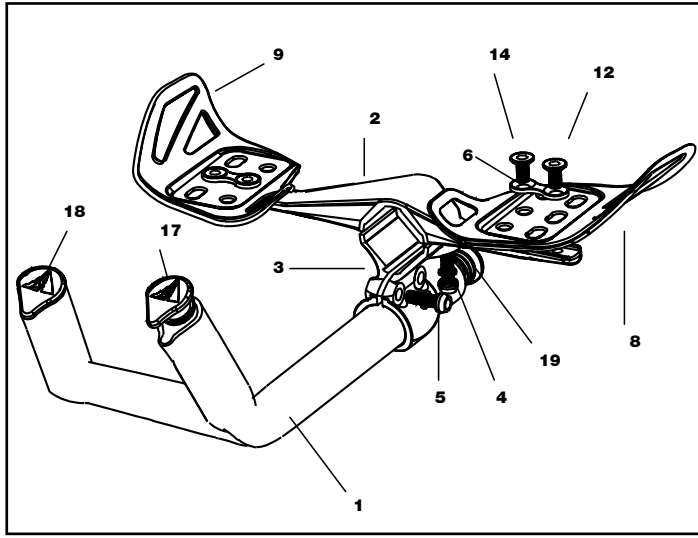


ABB. 1

Teilliste—Lightning Stryke™			
Anz.	Teil-Nr.	Ref.-Nr. #	Teilbezeichnung
1	852022	1	Aerobar—Lightning Stryke
1	104362	2	Bracket—Lightning Stryke Top
1	104363	3	Bracket—Lightning Stryke Bottom
2	313211	4	Bolt—M6x25 Mushroom Cap Black
2	919211	5	Bolt—M6x18 Mushroom Cap Black
2	275555	6	Washer—M6 Arm Trough
2	293111	7	Spacer—Elastomer*
1	200010	8	Arm Trough F-22 Left (Composite)
1	200011	9	Arm Trough F-22 Right (Composite)
2	276667	10	Post—M6 Riser (Composite)*
2	313625	11	Bolt—M6x25 Flat Head Black*
2	313411	12	Bolt—M6x13 Flat Head Black
4	313628	13	Bolt—M6x28 Flat Head Black*
4	313616	14	Bolt—M6x16 Flat Head Black
1	685166	15	Pad—F-22 w/Velcro Left*
1	685167	16	Pad—F-22 w/Velcro Right*
1	168430	17	End Plug—Aerobar Carbon Ergo. Left
1	168431	18	End Plug—Aerobar Carbon Ergo. Right
1	NN912	19	End Plug—Logo

\*Nicht dargestellt

## WARNING

- Periodically, closely examine all surfaces of this Profile Design component (after cleaning) in bright sunlight to check for any small hairline cracks or fatigue at „stress points“ (such as welds, seams, holes, points of contact with other parts etc.). If you see any cracks, no matter how small, stop using the part immediately and call Profile Design customer service. [AP0302-4-2]
- Whenever you install any new component on your bike make sure you thoroughly try it out close to home (with your helmet) where there are no obstacles or traffic. Make sure everything is working properly before going off on a ride or to a race. [AP1100-5-1]
- Racing (road, mountain or multi-sport) places extreme stress on bicycles and their components (like it does riders) and significantly shortens their usable life. If you participate in these types of events, the lifetime of the product may be significantly shortened depending upon the level and amount of racing. The „normal wear“ of a component may differ greatly between competitive and non-competitive uses, which is why professional level riders often use new bikes and components each season as well as having their bikes service by professional mechanics. Particular care should be placed in the regular examination of your bicycle and its components to insure your safety. [AP1100-6-1]
- A number of factors can reduce the life of this component to less than its warranty period. Rider size and/or strength, high mileage, rough terrain, abuse, improper installation, adverse weather conditions and crashes or accidents can all contribute to the shortening

of the life of this component. The more factors that are met, the more the life of the component is reduced. [AP0801-7-2]

- Make sure you periodically recheck ALL aerobar bolts for tightness. Many of these bolts can loosen due to road vibration, which can cause possible breakage and loss of control. Make sure only the Profile Design supplied bolts are used. [AB1100-1-1]
- Aerobars can require riding positions that are new or different to many riders. It is advisable to practice using these bars in a low traffic area to become accustomed to any changes in the steering or handling characteristics of the bike. Please exercise caution when using these types of handlebars for the first time. Also make sure that you continue to look forward when riding and do not look down towards the ground. [AB1100-2-1]
- If you ever crash and the handlebar, aerobar OR stem is damaged in any way, (slight bends or scrapes) ALL ADJOINING PARTS should be replaced as there may be undetectable damage to either part. Call Profile Design customer service and ask about our „Crash Replacement Policy“. [AB1100-3-1]
- Whenever a bike equipped with an aero bar is placed on a roof rack, remove the armrest pads (if they are Velcro attached). Profile Design Warranty does not cover pads lost during transport. [AB101-6-1]

## Profile Design GmbH

### Beschränkte weltweite Garantie

Profile Design GmbH garantiert dem ursprünglichen Käufer (Innen) für 2 Jahre ab dem ursprünglichen Kaufdatum im Fachgeschäft, dass das Profile Design-Produkt mit dem diese Garantie erhalten wurde frei von Material- und Herstellungsdefekten ist. Diese Garantie ist nicht auf einen nachfolgenden Käufer übertragbar. Die einzige Verpflichtung von Profile Design gemäß dieser Garantie ist eine Reparatur bzw. Ersatz nach der Wahl von Profile Design. Etwaige Ansprüche für mangelnde Produktkonformität aufgrund dieser Garantie müssen Profile Design innerhalb von 60 Tagen mitgeteilt werden.

### Garantieeinschränkungen

Die Dauer einer gesetzlichen Garantie bzw. der Bedingungen, der Marktgängigkeit, bzw. der Eignung für einen besonderen Zweck dieses Produkts usw., beschränkt sich auf die Dauer der oben zugesicherten Garantieleistung. Profile Design ist keinesfalls haftbar für Verluste, Ungelegenheiten oder Schäden, ob direkt, beiläufig, nachfolgend oder anderen, die das Ergebnis einer Nichteinhalten der ausdrücklichen oder implizierten Garantiebedingungen sind, bzw. die mit der Marktgängigkeit oder der Eignung für einen besonderen Zweck, oder andersweise mit diesem Produktzusammenhängen, außer was hier angegeben ist. Einige Staaten und Länder gestatten keine Eingrenzung der implizierten Garantiedauer, und einige erlauben keine Ausnahmen oder Einschränkungen der beiläufigen oder Folgeschäden, so dass obenstehende Einschränkungen oder Ausnahmen nicht auf Sie anwendbar sein könnten. Diese Garantie gibt Ihnen spezifische Rechte, und Sie können andere Rechte haben, die je nach Ort verschieden sind. Diese Garantie wird den Gesetzen der Vereinigten Staaten entsprechend ausgelegt. Die ursprüngliche, englischsprachige Version/ Bedeutung dieser Garantie hat Priorität über alle Übersetzungen, und Profile Design ist nicht für Übersetzungsfehler dieser Garantie oder der Produktanleitungen verantwortlich. Diese Garantie hat nicht die Absicht Ihnen andere zusätzliche gesetzliche Zuständigkeits- oder Garantierechte zu erteilen, als diejenigen, die hier angegeben und gesetzlich notwendig sind. Falls ein Teil dieser Garantie aus gewissen Gründen ungültig oder unwirksam ist, bedeutet dies nicht, dass andere Klauseln dadurch auch ungültig werden. Für Produkte, die außerhalb der Vereinigten Staaten erworben wurden, wenden Sie sich bitte an den autorisierten Vertreter von Profile Design im respektiven Land.

### Optionen des Garantieservices

Um eine Serviceleistung aufgrund dieser Garantie zu erhalten, müssen Sie entweder:

- Ihr Profile Design-Produkt zusammen mit diesem Garantieschein, der Originalquittung der Verkaufsstelle oder einem anderem ausreichendem Nachweis des Kaufdatums zum Fachgeschäft bringen, wo es gekauft wurde, oder zu einer autorisierten Profile Design-Verkaufsstelle, oder
- Senden Sie Ihr Profile Design-Produkt (mit Rückgabeanforderungsnummer an der Außenseite der Verpackung und am Produkt befestigt) zusammen mit der Originalquittung der Verkaufsstelle oder anderem ausreichendem Nachweis des Kaufdatums an Profile Design, 2677 El Presidio St., Long Beach, CA 90810, USA. Sie müssen dazu vor einer Rückgabe zuerst eine Autorisierungsnummer erhalten indem Sie Profile Design unter (310) 884-7756, intern 161, anrufen (oder per Email-Adresse warranty@profile-design.com kontaktieren).

Profile Design kann verlangen, dass Sie zuerst ein Garantieersatzantragsformular ausfüllen und unterschreiben, bevor Ihr Garantieanspruch bearbeitet wird.

Jegliche Porto- , Versicherungs- und Versandspesen, die beim Einsenden Ihres Profile Design-Produkts zwecks Service unter einer der obigen Optionen entstehen, fallen zu Ihren Lasten. Profile Design ist nicht verantwortlich für Produkte, die während des Versands beschädigt oder verloren wurden.

Für Produkte, die außerhalb der Vereinigten Staaten erworben wurden, wenden Sie sich bitte an den autorisierten Vertreter von Profile Design im Land in dem das Produkt gekauft wurde. Die Vertreter können auf der Website gefunden werden.

### Profile Design Sturzsatzstrategie

Profile Design versteht, dass Stürze geschehen und ein Austausch beschädigter Fahrradteile teuer sein kann. Als Resultat dessen versucht Profile Design eine Linderung der Schmerzen, indem ein Ersatzprodukt 30% unter dem gegenwärtig von Profile Design empfohlenen Preis in Ihrem respektiven Land angeboten wird. Alle anderen Klauseln dieser Garantie sind anwendbar, und die angegebene Prozedur zum Erhalten eines Garantieservice gelten auch für die Sturzstrategie. Profile Design trifft die endgültige Entscheidung, ob ein Teil der Sturzstrategie entsprechend gedeckt ist.

### Garantieausnahmen

Weder Detailhandel noch Verkäufer von Profile Design-Produkten sind autorisiert diese Garantie auf irgendwelche Weise abzuändern. Es ist Ihre Verantwortung das Produkt regelmäßig zu überprüfen, um festzustellen, ob eine normale Wartung oder ein Ersatz notwendig ist. Diese Garantie deckt das Folgende nicht:

- Produkte, die modifiziert, vernachlässigt oder unzureichend unterhalten wurden, bzw. für kommerzielle Zwecke verwendet, missbraucht oder schlecht behandelt wurden, oder die in Unfälle verwickelt waren.
- Schäden, die während des Versands des Produkts entstanden (solche Ansprüche müssen direkt an den Spediteur gestellt werden).
- Produktschäden, die das Resultat einer unrichtigen Zerlegung oder Reparatur sind, bzw. durch die Installation von anderen als den vorgesehenen Originalteilen oder -zubehör verursacht wurden, die nicht kompatibel sind, oder aus einer Nichtbefolgung von Produktwarnungen und Benutzungshinweisen entstanden.
- Eine Beschädigung oder Verschlechterung des Oberflächenzustands bzw. der ästhetischen Erscheinung des Produkts.
- Die notwendige Arbeit, um einen durch die Garantie gedeckten Gegenstand zu entfernen und wieder einzubauen bzw. einzustellen.
- Normale Abnutzung des Produkts.
- Jegliche Produkte bei denen der Konsument die oben dargestellten Garantieprozeduren nicht befolgt.

Siehe die Website [www.profile-design.com](http://www.profile-design.com) für die aktuelle Version dieser Garantie.

© Juni 2006 Profile Design

**Note to Dealers:** If you install this product for the consumer, please provide him/her with this owner's manual after installation.

**Thank you for purchasing the Profile Design Lightning Stryke™ aerobar. Please read these instructions thoroughly before attempting to install this item. Proper installation is required for compliance with Profile Design's warranty policy. If you are not familiar with the installation of aerobars, brakes, shifters or their accessories, please seek the assistance of your local Profile Design dealer by logging on to [www.profile-design.com](http://www.profile-design.com) and using "dealer search" or by calling Profile Design's customer service number.**

### Tools and materials required: 5mm Allen wrench, Torque wrench

- The Lightning Stryke is an aerobar with a unique stem clamping mechanism. This aerobar is designed to work with the Profile Design Lava/Lava OS and Hammer/Hammer OS stems with lengths of 90mm to 120mm. **[WARNING]** Do not install this aerobar with any other manufacturer's stems as this may cause the aerobar to slip while riding resulting in a loss of control.
- Threaded bolts have been pre-treated by Profile Design during production with a special blue thread locking compound. This special compound is easy to detect on the threads of all bolts provided. If you cannot detect this thread locking compound or if you have cleaned it off through normal maintenance, reapply a suitable blue thread locking compound as available from Loctite® or another company before assembly.
- For installation with a new stem, please follow our installation of that product.
- Using the 5mm Allen wrench, install the top bracket (#2) and bottom bracket (#3) around the stem and tighten the M6x25 mushroom head bolts (#4) to a torque of 40-50 in-lbs (4.5-5.6 Nm). The top and bottom brackets will contact each other after tightening the bolts. Note that the top bracket should have the arm bridges arc forward – this will allow for more knee clearance while riding. The bottom bracket should have the extension clamp projecting forward – this will allow for maximum headtube clearance.
- Install the Lightning Stryke Extension (#1) into the bottom bracket clamp and adjust to desired length. Evenly tighten the M6x18 bottom bracket clamp bolts (#5) to a torque of 40-50 in-lbs (4.5-5.6 Nm)—after tightening these bolts the bracket system will be secure on the stem. There is a Nylon washer pre-installed in the bottom bracket—DO NOT REMOVE THIS WASHER. In order to get your desired length you may need to trim the carbon extension. Prior to cutting the extension shorter, please measure as accurately as possible the desired length—extensions cut too short are not covered under Profile Design's warranty. Once the cutting area is determined, place masking tape around the cutting area (taking care to clearly mark the cut line) and, using a cutting guide, cut through the aerobar extension using a medium or fine tooth (24t or 32t) hacksaw. The masking tape and medium or fine tooth hacksaw will help prevent slight splintering of the carbon fiber. **[WARNING]** Cut all the way through the extension! Do not leave a "tag" end of carbon by failing to cut through the extension. This may splinter the carbon and weaken the extension. Profile Design recommends leaving 20mm of extension exposed behind the bottom bracket clamp.
- If you wish to install bar end shifters into the tip of the extension (#1), slide control cable and housing through the holes provided in the tube. DO NOT DRILL ADDITIONAL HOLES IN THE EXTENSION BAR. Tighten the mounting bolt until lever is firmly in place. **[WARNING]** DO NOT OVER TIGHTEN MOUNTING BOLT AS THIS MAY DAMAGE THE CARBON TUBE. Do not exceed 45in-lbs (5Nm).
- To install the F-22 arm troughs in the widest position use an M6x13 flat head bolt (#12) for the outer hole of the top bracket bridge and an M6x16 (#14) flat head bolt for the middle hole of the top bracket bridge. Insert the bolts through the arm trough washer (#6), into the F-22 arm trough (#8 & 9), through the elastomer spacer (#7), and thread the bolts into the top bracket arm bridge (#2). For the narrower armrest position use two M6x16 flat head bolts per side. Using a 5mm Allen wrench, tighten each bolt to the arm bridge with a torque of 30in-lbs (3.4 Nm). Two bolts are required per side to prevent the arm troughs from spinning on the bridges. Repeat on second arm trough.
- To achieve a higher riding position, remove the M6x13 and M6x16 flat head bolts and reinstall using the M6x25 (#11) and M6x28 (#13) flat head bolts respectively. Insert the bolts through the arm trough washer, into the F22 arm trough, through the holes of the riser post (#10), and thread into the arm bridges of the aerobar. Choose the bolt holes of the arm bridge to adjust the width of the arm trough for comfort. Using a 5mm Allen wrench, tighten each bolt to the arm bridge with a torque of 30in-lbs (3.4 Nm). Two bolts are required per side to prevent the arm troughs from spinning on the bridges. Repeat on second arm trough.
- Remove the Velcro backing from the F-22 arm pads (#15 & 16) and apply to each of the F-22 arm troughs. To get maximum adhesion of the Velcro backing use the broad flat section of an Allen wrench or a pen to firmly press the Velcro backing against the armrest. Apply each arm pad to the arm trough and hold firmly for 30 seconds to insure proper attachment.
- Wrap bars as desired and install end plus as required.
- Recheck the bolts for tightness after first usage and periodically thereafter to insure secure attachment of the aerobar.

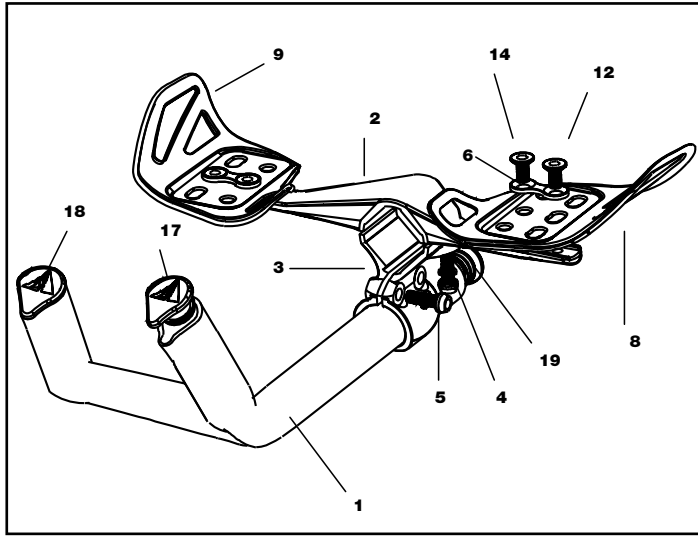


FIG. 1

Parts List—Lightning Stryke™			
Qty.	Part #	Ref. #	Part Description
1	852022	1	Aerobar—Lightning Stryke
1	104362	2	Bracket—Lightning Stryke Top
1	104363	3	Bracket—Lightning Stryke Bottom
2	313211	4	Bolt—M6x25 Mushroom Cap Black
2	919211	5	Bolt—M6x18 Mushroom Cap Black
2	275555	6	Washer—M6 Arm Trough
2	293111	7	Spacer—Elastomer*
1	200010	8	Arm Trough F-22 Left (Composite)
1	200011	9	Arm Trough F-22 Right (Composite)
2	276667	10	Post—M6 Riser (Composite)*
2	313625	11	Bolt—M6x25 Flat Head Black*
2	313411	12	Bolt—M6x13 Flat Head Black
4	313628	13	Bolt—M6x28 Flat Head Black*
4	313616	14	Bolt—M6x16 Flat Head Black
1	685166	15	Pad—F-22 w/Velcro Left*
1	685167	16	Pad—F-22 w/Velcro Right*
1	168430	17	End Plug—Aerobar Carbon Ergo. Left
1	168431	18	End Plug—Aerobar Carbon Ergo. Right
1	NN912	19	End Plug—Logo

\*Not pictured

## WARNING

- Periodically, closely examine all surfaces of this Profile Design component (after cleaning) in bright sunlight to check for any small hairline cracks or fatigue at „stress points“ (such as welds, seams, holes, points of contact with other parts, etc.). If you see any cracks, no matter how small, stop using the part immediately and call Profile Design customer service. [AP0302-4-2]
- Whenever you install any new component on your bike make sure you thoroughly try it out close to home (with your helmet) where there are no obstacles or traffic. Make sure everything is working properly before going off on a ride or to a race. [AP1100-5-1]
- Racing (road, mountain or multi-sport) places extreme stress on bicycles and their components (like it does riders) and significantly shortens their usable life. If you participate in these types of events, the lifetime of the product may be significantly shortened depending upon the level and amount of racing. The „normal wear“ of a component may differ greatly between competitive and non-competitive uses, which is why professional level riders often use new bikes and components each season as well as having their bikes service by professional mechanics. Particular care should be placed in the regular examination of your bicycle and its components to insure your safety. [AP1100-6-1]
- A number of factors can reduce the life of this component to less than its warranty period. Rider size and/or strength, high mileage, rough terrain, abuse, improper installation, adverse weather conditions and crashes or accidents can all contribute to the shortening

of the life of this component. The more factors that are met, the more the life of the component is reduced. [AP0801-7-2]

- Make sure you periodically recheck ALL aerobar bolts for tightness. Many of these bolts can loosen due to road vibration, which can cause possible breakage and loss of control. Make sure only the Profile Design supplied bolts are used. [AB1100-1-1]
- Aerobars can require riding positions that are new or different to many riders. It is advisable to practice using these bars in a low traffic area to become accustomed to any changes in the steering or handling characteristics of the bike. Please exercise caution when using these types of handlebars for the first time. Also make sure that you continue to look forward when riding and do not look down towards the ground. [AB1100-2-1]
- If you ever crash and the handlebar, aerobar OR stem is damaged in any way, (slight bends or scrapes) ALL ADJOINING PARTS should be replaced as there may be undetectable damage to either part. Call Profile Design customer service and ask about our „Crash Replacement Policy“. [AB1100-3-1]
- Whenever a bike equipped with an aerobar is placed on a roof rack, remove the armrest pads (if they are Velcro attached). Profile Design Warranty does not cover pads lost during transport. [AB101-6-1]

## Profile Design, LLC

### Worldwide Limited Warranty

Profile Design LLC warrants to the original retail purchaser ("you") that the Profile Design product for which they received this warranty is free from defects in material and workmanship for two years from the date of original retail purchase. This warranty is not transferable to a subsequent purchaser. Profile Design's sole obligation under this warranty is to repair or replace the product, at Profile Design's option. Profile Design must be notified in writing of any claim under this warranty within 60 days of any claimed lack of conformity of the product.

### Warranty Limitations

The duration of any implied warranty or condition, of merchantability, fitness for a particular purpose, or otherwise, on this product shall be limited to the duration of the express warranty set forth above. In no event shall Profile Design be liable for any loss, inconvenience or damage, whether direct, incidental, consequential or otherwise, resulting from breach of any express or implied warranty or condition, of merchantability, fitness for a particular purpose, or otherwise with respect to this product, except as set forth herein. Some states or countries do not allow limitation on how long an implied warranty lasts and some do not allow exclusions or limitations of incidental or consequential damages, so the above limitations or exclusions may not apply to you. This warranty gives you specific legal rights, and you may also have other rights, which may vary, from location to location. This warranty will be interpreted pursuant to the laws of the United States. The original English language version/meaning of this warranty controls over all translations and Profile Design is not responsible for any errors in translation of this warranty or any product instructions. This warranty is not intended to confer any additional legal, jurisdictional or warranty rights to you other than those set forth herein or required by law. If any portion of this warranty is held to be invalid or unenforceable for any reason, such finding will not invalidate any other provision. For products purchased in countries other than the United States please contact Profile Design's authorized distributor in that respective country.

### Warranty Service Options

To obtain service under this warranty you must either:

- Bring or send your Profile Design product, together with this warranty, the retail seller's original receipt or other satisfactory proof of the date of purchase to the retailer where you purchased the item or another authorized Profile Design retailer, or
- Send your Profile Design product (with the return authorization number on the outside of the shipping container and affixed to the product), together with the retail seller's original receipt or other satisfactory proof of the date of purchase to Profile Design 2677 El Presidio St., Long Beach, CA 90810 USA. You must first obtain a return authorization number by calling Profile Design at (310) 884-7756 ext. 161 (or send an email to warranty@profile-design.com) prior to returning the product to Profile Design.

Profile Design may require that you complete and sign a warranty replacement request form before processing your warranty claim.

Any postage, insurance or other shipping costs incurred in sending your Profile Design product for service under either option above is your responsibility. Profile Design will not be responsible for products lost or damaged in shipping.

For products purchased in countries other than the United States please contact Profile Design's authorized distributor in the country where the product was purchased. They can be found on our website at [www.profile-design.com](http://www.profile-design.com)

### Profile Design Crash Replacement Policy

Profile Design understands that crashes can happen and replacement of damaged bicycle parts can be costly. As a result Profile Design will attempt to ease the pain by offering you a replacement product for 30% below Profile Design's current suggested retail price in your respective country. All other provisions of this warranty apply and the procedures outlined for warranty service apply also to the crash replacement policy. Profile Design will make the final decision on whether the part will be covered under the crash replacement policy.

### Warranty Exclusions

Retailers and sellers of Profile Design products are not authorized to modify this warranty in any way. It is your responsibility to regularly examine the product to determine the need for normal service or replacement. This warranty does not cover the following:

- Products that have been modified, neglected or poorly maintained, used for commercial purposes, mis-used or abused or involved in accidents.
- Damage occurring during shipment of the products (such claims must be presented directly to the shipper).
- Damage to products resulting from improper assembly or repair, the use or installation of parts or accessories not compatible with the original intended use of the product, or the failure to follow the product warnings and usage instructions.
- Damage or deterioration to the surface finish, aesthetics or appearance of the product.
- The labor required to remove and/or re-fit and re-adjust the item covered by this warranty.
- Normal wear to the product.
- Any products for which the consumer does not follow the warranty procedures outlined above.

For the current version of this warranty please visit our website at [www.profile-design.com](http://www.profile-design.com)

(© June 2006 Profile Design)



# Lightning Stryke™

## Instructions d'installation



# Lightning Stryke™

## Instrucciones de Instalación

**Note pour les Vendeurs:** Si vous installez ce produit pour votre client, veuillez lui donner son manuel utilisateur après l'installation.

**Thank you for purchasing the Profile Design Lightning Stryke™ aerobar. Please read these instructions thoroughly before attempting to install this item. Proper installation is required for compliance with Profile Design's warranty policy. If you are not familiar with the installation of aerobars, brakes, shifters or their accessories, please seek the assistance of your local Profile Design dealer by logging on to [www.profile-design.com](http://www.profile-design.com) and using "dealer search" or by calling Profile Design's customer service number.**

### Outils et matériels requis: 5mm Allen wrench, Torque wrench

- The Lightning Stryke is an aerobar with a unique stem clamping mechanism. This aerobar is designed to work with the Profile Design Lava/ Lava OS and Hammer/Hammer OS stems with lengths of 90mm to 120mm. **[AVERTISSEMENT]** Do not install this aerobar with any other manufacturer's stems as this may cause the aerobar to slip while riding resulting in a loss of control.
- Threaded bolts have been pre-treated by Profile Design during production with a special blue thread locking compound. This special compound is easy to detect on the threads of all bolts provided. If you cannot detect this thread locking compound or if you have cleaned it off through normal maintenance, re-apply a suitable blue thread locking compound as available from Loctite® or another company before assembly.
- For installation with a new stem, please follow our installation of that product.
- Using the 5mm Allen wrench, install the top bracket (#2) and bottom bracket (#3) around the stem and tighten the M6x25 mushroom head bolts (#4) to a torque of 40-50 in-lbs (4.5-5.6 Nm). The top and bottom brackets will contact each other after tightening the bolts. Note that the top bracket should have the arm bridges arc forward – this will allow for more knee clearance while riding. The bottom bracket should have the extension clamp projecting forward – this will allow for maximum headtube clearance.
- Install the Lightning Stryke Extension (#1) into the bottom bracket clamp and adjust to desired length. Evenly tighten the M6x18 bottom bracket clamp bolts (#5) to a torque of 40-50 in-lbs (4.5-5.6 Nm)—after tightening these bolts the bracket system will be secure on the stem. There is a Nylon washer pre-installed in the bottom bracket—DO NOT REMOVE THIS WASHER. In order to get your desired length you may need to trim the carbon extension. Prior to cutting the extension shorter, please measure as accurately as possible the desired length—extensions cut too short are not covered under Profile Design's warranty. Once the cutting area is determined, place masking tape around the cutting area (taking care to clearly mark the cut line) and, using a cutting guide, cut through the aerobar extension using a medium or fine tooth (24t or 32t) hacksaw. The masking tape and medium or fine tooth hacksaw will help prevent slight splintering of the carbon fiber. **[AVERTISSEMENT]** Cut all the way through the extension! Do not leave a "tag" end of carbon by failing to cut through the extension. This may splinter the carbon and weaken the extension. Profile Design recommends leaving 20mm of extension exposed behind the bottom bracket clamp.
- If you wish to install bar end shifters into the tip of the extension (#1), slide control cable and housing through the holes provided in the tube. DO NOT DRILL ADDITIONAL HOLES IN THE EXTENSION BAR. Tighten the mounting bolt until lever is firmly in place. **[AVERTISSEMENT]** DO NOT OVER TIGHTEN MOUNTING BOLT AS THIS MAY DAMAGE THE CARBON TUBE. Do not exceed 45in-lbs (5Nm).
- To install the F-22 arm troughs in the widest position use an M6x13 flat head bolt (#12) for the outer hole of the top bracket bridge and an M6x16 (#14) flat head bolt for the middle hole of the top bracket bridge. Insert the bolts through the arm trough washer (#6), into the F-22 arm trough (#8 & 9), through the elastomer spacer (#7), and thread the bolts into the top bracket arm bridge (#2). For the narrower armrest position use two M6x16 flat head bolts per side. Using a 5mm Allen wrench, tighten each bolt to the arm bridge with a torque of 30in-lbs (3.4 Nm). Two bolts are required per side to prevent the arm troughs from spinning on the bridges. Repeat on second arm trough.
- To achieve a higher riding position, remove the M6x13 and M6x16 flat head bolts and re-install using the M6x25 (#11) and M6x28 (#13) flat head bolts respectively. Insert the bolts through the arm trough washer, into the F22 arm trough, through the holes of the riser post (#10), and thread into the arm bridges of the aerobar. Choose the bolt holes of the arm bridge to adjust the width of the arm trough for comfort. Using a 5mm Allen wrench, tighten each bolt to the arm bridge with a torque of 30in-lbs (3.4 Nm). Two bolts are required per side to prevent the arm troughs from spinning on the bridges. Repeat on second arm trough.
- Remove the Velcro backing from the F-22 arm pads (#15 & 16) and apply to each of the F-22 arm troughs. To get maximum adhesion of the Velcro backing use the broad flat section of an Allen wrench or a pen to firmly press the Velcro backing against the armrest. Apply each arm pad to the arm trough and hold firmly for 30 seconds to insure proper attachment.
- Wrap bars as desired and install end plus as required.
- Recheck the bolts for tightness after first usage and periodically thereafter to insure secure attachment of the aerobar.

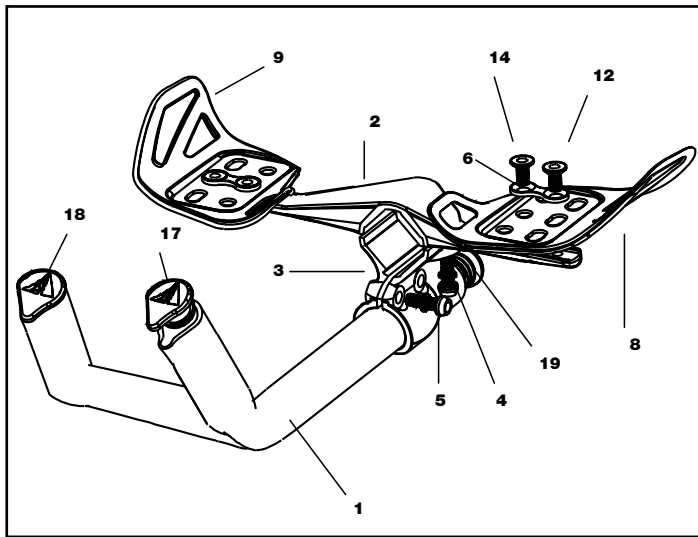


FIG. 1

Liste des Parties—Lightning Stryke™			
Qté.	Partie #	Réf. #	Description de Partie
1	852022	1	Aerobar—Lightning Stryke
1	104362	2	Bracket—Lightning Stryke Top
1	104363	3	Bracket—Lightning Stryke Bottom
2	313211	4	Bolt—M6x25 Mushroom Cap Black
2	919211	5	Bolt—M6x18 Mushroom Cap Black
2	275555	6	Washer—M6 Arm Trough
2	293111	7	Spacer—Elastomer*
1	200010	8	Arm Trough F-22 Left (Composite)
1	200011	9	Arm Trough F-22 Right (Composite)
2	276667	10	Post—M6 Riser (Composite)*
2	313625	11	Bolt—M6x25 Flat Head Black*
2	313411	12	Bolt—M6x13 Flat Head Black
4	313628	13	Bolt—M6x28 Flat Head Black*
4	313616	14	Bolt—M6x16 Flat Head Black
1	685166	15	Pad—F-22 w/Velcro Left*
1	685167	16	Pad—F-22 w/Velcro Right*
1	168430	17	End Plug—Aerobar Carbon Ergo. Left
1	168431	18	End Plug—Aerobar Carbon Ergo. Right
1	NN912	19	End Plug—Logo

\*Sans image

**Nota a los Comerciantes:** Si usted instala este producto para el consumidor, proporcione este manual del propietario a él/ella después de la instalación.

**Thank you for purchasing the Profile Design Lightning Stryke™ aerobar. Please read these instructions thoroughly before attempting to install this item. Proper installation is required for compliance with Profile Design's warranty policy. If you are not familiar with the installation of aerobars, brakes, shifters or their accessories, please seek the assistance of your local Profile Design dealer by logging on to [www.profile-design.com](http://www.profile-design.com) and using "dealer search" or by calling Profile Design's customer service number.**

### Herramientas y materiales necesarios: 5mm Allen wrench, Torque wrench

- The Lightning Stryke is an aerobar with a unique stem clamping mechanism. This aerobar is designed to work with the Profile Design Lava/Lava OS and Hammer/Hammer OS stems with lengths of 90mm to 120mm. **[WARNING]** Do not install this aerobar with any other manufacturer's stems as this may cause the aerobar to slip while riding resulting in a loss of control.
- Threaded bolts have been pre-treated by Profile Design during production with a special blue thread locking compound. This special compound is easy to detect on the threads of all bolts provided. If you cannot detect this thread locking compound or if you have cleaned it off through normal maintenance, re-apply a suitable blue thread locking compound as available from Loctite® or another company before assembly.
- For installation with a new stem, please follow our installation of that product.
- Using the 5mm Allen wrench, install the top bracket (#2) and bottom bracket (#3) around the stem and tighten the M6x25 mushroom head bolts (#4) to a torque of 40-50 in-lbs (4.5-5.6 Nm). The top and bottom brackets will contact each other after tightening the bolts. Note that the top bracket should have the arm bridges arc forward – this will allow for more knee clearance while riding. The bottom bracket should have the extension clamp projecting forward – this will allow for maximum headtube clearance.
- Install the Lightning Stryke Extension (#1) into the bottom bracket clamp and adjust to desired length. Evenly tighten the M6x18 bottom bracket clamp bolts (#5) to a torque of 40-50 in-lbs (4.5-5.6 Nm)—after tightening these bolts the bracket system will be secure on the stem. There is a Nylon washer pre-installed in the bottom bracket—DO NOT REMOVE THIS WASHER. In order to get your desired length you may need to trim the carbon extension. Prior to cutting the extension shorter, please measure as accurately as possible the desired length—extensions cut too short are not covered under Profile Design's warranty. Once the cutting area is determined, place masking tape around the cutting area (taking care to clearly mark the cut line) and, using a cutting guide, cut through the aerobar extension using a medium or fine tooth (24t or 32t) hacksaw. The masking tape and medium or fine tooth hacksaw will help prevent slight splintering of the carbon fiber. **[WARNING]** Cut all the way through the extension! Do not leave a "tag" end of carbon by failing to cut through the extension. This may splinter the carbon and weaken the extension. Profile Design recommends leaving 20mm of extension exposed behind the bottom bracket clamp.
- If you wish to install bar end shifters into the tip of the extension (#1), slide control cable and housing through the holes provided in the tube. DO NOT DRILL ADDITIONAL HOLES IN THE EXTENSION BAR. Tighten the mounting bolt until lever is firmly in place. **[WARNING]** DO NOT OVER TIGHTEN MOUNTING BOLT AS THIS MAY DAMAGE THE CARBON TUBE. Do not exceed 45in-lbs (5Nm).
- To install the F-22 arm troughs in the widest position use an M6x13 flat head bolt (#12) for the outer hole of the top bracket bridge and an M6x16 (#14) flat head bolt for the middle hole of the top bracket bridge. Insert the bolts through the arm trough washer (#6), into the F-22 arm trough (#8 & 9), through the elastomer spacer (#7), and thread the bolts into the top bracket arm bridge (#2). For the narrower armrest position use two M6x16 flat head bolts per side. Using a 5mm Allen wrench, tighten each bolt to the arm bridge with a torque of 30in-lbs (3.4 Nm). Two bolts are required per side to prevent the arm troughs from spinning on the bridges. Repeat on second arm trough.
- To achieve a higher riding position, remove the M6x13 and M6x16 flat head bolts and re-install using the M6x25 (#11) and M6x28 (#13) flat head bolts respectively. Insert the bolts through the arm trough washer, into the F22 arm trough, through the holes of the riser post (#10), and thread into the arm bridges of the aerobar. Choose the bolt holes of the arm bridge to adjust the width of the arm trough for comfort. Using a 5mm Allen wrench, tighten each bolt to the arm bridge with a torque of 30in-lbs (3.4 Nm). Two bolts are required per side to prevent the arm troughs from spinning on the bridges. Repeat on second arm trough.
- Remove the Velcro backing from the F-22 arm pads (#15 & 16) and apply to each of the F-22 arm troughs. To get maximum adhesion of the Velcro backing use the broad flat section of an Allen wrench or a pen to firmly press the Velcro backing against the armrest. Apply each arm pad to the arm trough and hold firmly for 30 seconds to insure proper attachment.
- Wrap bars as desired and install end plus as required.
- Recheck the bolts for tightness after first usage and periodically thereafter to insure secure attachment of the aerobar.

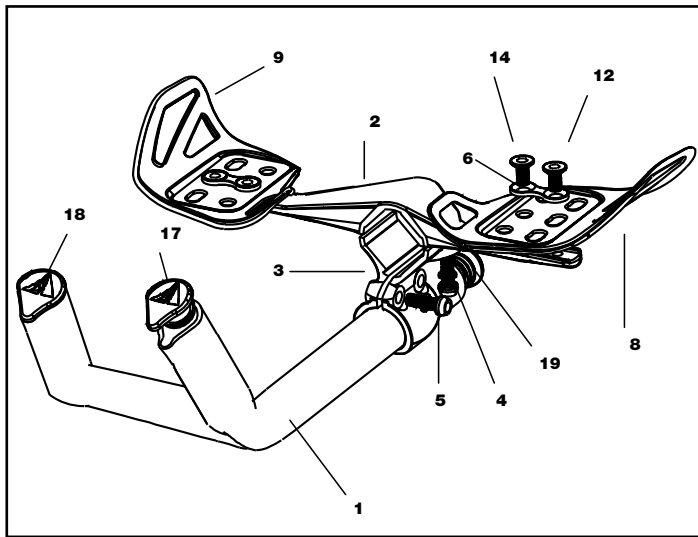


FIG. 1

Lista de Piezas—Lightning Stryke™			
Ctd.	Pieza #	Ref. #	Descripción de Pieza
1	852022	1	Aerobar—Lightning Stryke
1	104362	2	Bracket—Lightning Stryke Top
1	104363	3	Bracket—Lightning Stryke Bottom
2	313211	4	Bolt—M6x25 Mushroom Cap Black
2	919211	5	Bolt—M6x18 Mushroom Cap Black
2	275555	6	Washer—M6 Arm Trough
2	293111	7	Spacer—Elastomer*
1	200010	8	Arm Trough F-22 Left (Composite)
1	200011	9	Arm Trough F-22 Right (Composite)
2	276667	10	Post—M6 Riser (Composite)*
2	313625	11	Bolt—M6x25 Flat Head Black*
2	313411	12	Bolt—M6x13 Flat Head Black
4	313628	13	Bolt—M6x28 Flat Head Black*
4	313616	14	Bolt—M6x16 Flat Head Black
1	685166	15	Pad—F-22 w/Velcro Left*
1	685167	16	Pad—F-22 w/Velcro Right*
1	168430	17	End Plug—Aerobar Carbon Ergo. Left
1	168431	18	End Plug—Aerobar Carbon Ergo. Right
1	NN912	19	End Plug—Logo

\*No mostrado

## AVERTISSEMENT

- Periodically, closely examine all surfaces of this Profile Design component (after cleaning) in bright sunlight to check for any small hairline cracks or fatigue at "stress points" (such as welds, seams, holes, points of contact with other parts etc.). If you see any cracks, no matter how small, stop using the part immediately and call Profile Design customer service. [AP0302-4-2]
- Whenever you install any new component on your bike make sure you thoroughly try it out close to home (with your helmet) where there are no obstacles or traffic. Make sure everything is working properly before going off on a ride or to a race. [AP1100-5-1]
- Racing (road, mountain or multi-sport) places extreme stress on bicycles and their components (like it does riders) and significantly shortens their usable life. If you participate in these types of events, the lifetime of the product may be significantly shortened depending upon the level and amount of racing. The "normal wear" of a component may differ greatly between competitive and non-competitive uses, which is why professional level riders often use new bikes and components each season as well as having their bikes service by professional mechanics. Particular care should be placed in the regular examination of your bicycle and its components to insure your safety. [AP1100-6-1]
- A number of factors can reduce the life of this component to less than its warranty period. Rider size and/or strength, high mileage, rough terrain, abuse, improper installation, adverse weather conditions and crashes or accidents can all contribute to the shortening

of the life of this component. The more factors that are met, the more the life of the component is reduced. [AP0801-7-2]

- Make sure you periodically recheck ALL aerobar bolts for tightness. Many of these bolts can loosen due to road vibration, which can cause possible breakage and loss of control. Make sure only the Profile Design supplied bolts are used. [AB1100-1-1]
- Aerobars can require riding positions that are new or different to many riders. It is advisable to practice using these bars in a low traffic area to become accustomed to any changes in the steering or handling characteristics of the bike. Please exercise caution when using these types of handlebars for the first time. Also make sure that you continue to look forward when riding and do not look down towards the ground. [AB1100-2-1]
- If you ever crash and the handlebar, aerobar OR stem is damaged in any way, (slight bends or scrapes) ALL ADJOINING PARTS should be replaced as there may be undetectable damage to either part. Call Profile Design customer service and ask about our "Crash Replacement Policy". [AB1100-3-1]
- Whenever a bike equipped with an aero bar is placed on a roof rack, remove the armrest pads (if they are Velcro attached). Profile Design Warranty does not cover pads lost during transport. [AB101-6-1]

Pour les produits achetés dans des pays autres que les États-Unis, contactez le distributeur autorisé de Profile Design dans le pays où ils ont été achetés. Ils peuvent être trouvés sur notre site [www.profile-design.com](http://www.profile-design.com)

### Exclusions de Garantie

Les détaillants et vendeurs de produits Titec ne sont pas autorisés à modifier cette garantie en aucune façon. Il est de votre responsabilité d'examiner régulièrement le produit pour déterminer tout besoin pour un service normal ou un remplacement. Cette garantie ne couvre pas ce qui suit:

- Les produits qui ont été modifiés, négligés ou incorrectement entretenus, utilisés pour des objectifs commerciaux, mal utilisés ou impliqués dans des accidents.
- Les dommages rencontrés durant l'expédition des produits (de telles plaintes doivent être déposées directement auprès du transporteur).
- Les dommages aux produits provenant d'un assemblage ou d'une réparation incorrecte, de l'utilisation de parties ou accessoires non compatibles avec l'utilisation originale prévue ou de l'impossibilité à respecter les avertissements et les instructions d'utilisation du produit.
- Les dommages ou détériorations à la finition de la surface, à l'esthétisme ou l'apparence du produit.
- Le travail exigé pour enlever et/ou réajuster l'article couvert par cette garantie.
- Toute brisure normale du produit.
- Tout produit pour lequel le consommateur ne suit pas les procédures de la garantie comme indiquées ci-dessus.

Pour la version acutelle de cette garantie, veuillez visiter notre site Web à [www.profile-design.com](http://www.profile-design.com)

(© Juin 2006 Profile Design)

## WARNING

- Periodically, closely examine all surfaces of this Profile Design component (after cleaning) in bright sunlight to check for any small hairline cracks or fatigue at "stress points" (such as welds, seams, holes, points of contact with other parts etc.). If you see any cracks, no matter how small, stop using the part immediately and call Profile Design customer service. [AP0302-4-2]
- Whenever you install any new component on your bike make sure you thoroughly try it out close to home (with your helmet) where there are no obstacles or traffic. Make sure everything is working properly before going off on a ride or to a race. [AP1100-5-1]
- Racing (road, mountain or multi-sport) places extreme stress on bicycles and their components (like it does riders) and significantly shortens their usable life. If you participate in these types of events, the lifetime of the product may be significantly shortened depending upon the level and amount of racing. The "normal wear" of a component may differ greatly between competitive and non-competitive uses, which is why professional level riders often use new bikes and components each season as well as having their bikes service by professional mechanics. Particular care should be placed in the regular examination of your bicycle and its components to insure your safety. [AP1100-6-1]
- A number of factors can reduce the life of this component to less than its warranty period. Rider size and/or strength, high mileage, rough terrain, abuse, improper installation, adverse weather conditions and crashes or accidents can all contribute to the shortening

of the life of this component. The more factors that are met, the more the life of the component is reduced. [AP0801-7-2]

- Make sure you periodically recheck ALL aerobar bolts for tightness. Many of these bolts can loosen due to road vibration, which can cause possible breakage and loss of control. Make sure only the Profile Design supplied bolts are used. [AB1100-1-1]
- Aerobars can require riding positions that are new or different to many riders. It is advisable to practice using these bars in a low traffic area to become accustomed to any changes in the steering or handling characteristics of the bike. Please exercise caution when using these types of handlebars for the first time. Also make sure that you continue to look forward when riding and do not look down towards the ground. [AB1100-2-1]
- If you ever crash and the handlebar, aerobar OR stem is damaged in any way, (slight bends or scrapes) ALL ADJOINING PARTS should be replaced as there may be undetectable damage to either part. Call Profile Design customer service and ask about our "Crash Replacement Policy". [AB1100-3-1]
- Whenever a bike equipped with an aero bar is placed on a roof rack, remove the armrest pads (if they are Velcro attached). Profile Design Warranty does not cover pads lost during transport. [AB101-6-1]

## Profile Design, LLC

### Garantie Limitée Mondiale

#### Worldwide Limited Warranty

Profile Design garantit à l'acheteur au détail original («vous») que le produit Profile Design pour lequel il a reçu cette garantie est sans défauts au niveau du matériel et de la main-d'œuvre pour deux années à partir de la date d'achat de la vente au détail originale. Cette garantie n'est pas transmissible à un acheteur subséquent. La seule obligation de Profile Design sous cette garantie consiste à réparer ou remplacer le produit, à l'option de Profile Design. Profile Design doit être notifié par écrit de toute demande sous cette garantie dans les 60 jours de tout manque déclaré de conformité du produit.

#### Limites de la garantie

La durée de toute garantie ou condition implicite, de commerciabilité, d'aptitude pour un but particulier ou autre, sur ce produit sera limitée à la durée de la garantie exacte présentée ci-dessus. En aucun cas Profile Design ne sera responsable pour toute perte, dérangement ou dégat, direct, accidentel, consécutiel ou autre, résultant d'infraction de toute garantie ou condition expresse ou garantie, de commerciabilité, d'aptitude pour un but particulier ou autre en ce qui concerne ce produit, sauf comme indiqué ici. Certains Etats ou pays ne permettent pas les limites sur la durée de la garantie implicite et d'autres n'autorisent pas les exclusions ou limites aux dommages accidentels ou consécutiels, de ce fait ces limites ou exclusions peuvent ne pas s'appliquer à vous. Cette garantie vous donne des droits légaux spécifiques, et vous pouvez avoir aussi d'autres droits qui peuvent varier d'un endroit à un autre. Cette garantie sera interprétée selon les lois des États-Unis. Le sens/version de la langue anglaise originale de cette garantie contrôle toutes les traductions et Profile Design n'est pas responsable pour toute erreur dans la traduction de cette garantie ou toute directive du produit. Cette garantie n'est pas destinée à conférer tout droit légal ou juridictionnel supplémentaire ou des droits de garantie autres que ceux présentés ici ou exigés par la loi. Si toute partie de cette garantie est tenue pour invalide ou inapplicable pour toute raison, une telle découverte n'invalidera pas toute autre provision. Pour les produits achetés dans des pays autres que les États-Unis, veuillez contacter le distributeur autorisé de Profile Design dans ce pays respectif.

#### Options du Service de garantie

Pour obtenir un service sous garantie, vous devez:

- Apporter ou envoyer votre produit Profile Design, avec cette garantie, le reçu original du vendeur au détail ou toute autre preuve satisfaisante de la date d'achat au détail depuis le détaillant où vous avez acheté l'article ou de tout autre détaillant Profile Design autorisé ou
- Envoyer votre produit Profile Design (avec le numéro d'autorisation du retour sur l'extérieur de l'emballage de transport et apposé au produit), avec le reçu original du vendeur au détail ou toute autre preuve satisfaisante de la date d'achat au détail à Profile Design 2677 El Presidio St. Long Beach, CA 90810 USA. Vous devez obtenir en premier un numéro d'autorisation de retour en appelant Profile Design à (310) 884-7756 ext. 161 (ou envoyez un email à [warranty@profile-design.com](mailto:warranty@profile-design.com)) avant de rendre le produit à Profile Design.

Profile Design peut exiger que vous remplissiez et signez un formulaire de requête pour remplacement de la garantie avant de traiter votre demande de garantie.

Tout affranchissement, assurance ou autres coûts de transport encourus pour envoyer votre produit Profile Design pour un service sous une des options ci-dessus sont votre responsabilité. Profile Design ne sera pas responsable pour les produits perdus ou endommagés durant le transport.

## Profile Design, LLC

### Garantía Limitada a Nivel Mundial

Dibujo de Perfil LLC garantiza al comprador original al por menor ("usted") que el producto del Profile Design por lo cual ellos recibieron esta garantía está libre de defectos tanto de fabricación como en los materiales utilizados por dos años desde la fecha de compra original al por menor. Esta garantía no es transferible a un comprador subsiguiente. La única obligación de Profile Design bajo esta garantía está limitada a reparar o reemplazar el producto, según opción Profile Design. Profile Design debe ser notificado por escrito con relación a cualquier demanda bajo esta garantía dentro de 60 días desde la fecha de reclamación de inconformidad del producto.

#### Limites de la Garantía

La duración de cualquier garantía o condición implícita, aptitud para la venta o aptitud para un propósito en particular, o de otra manera, en este producto estarán limitadas a la duración de la garantía explícita publicada abajo. Bajo ninguna circunstancia deberá Profile Design ser responsable por cualquier pérdida, inconveniencia o daño, directo, indirecto, consecuente que resulte de infracción de cualquier garantía o condición explícita o implícita de aptitud para la venta o aptitud para un propósito particular, o de otra manera, con respecto a este producto, excepto como establecido aquí. Algunos estados o países no permiten la exclusión o limitación de los daños incidentales o emergentes, por lo tanto, puede que tales exclusiones o limitaciones no sean de aplicación a usted. Esta garantía le proporciona derechos legales específicos, y puede que usted goce de otros derechos que varíen de jurisdicción en jurisdicción.

Esta garantía será interpretada según las leyes de los Estados Unidos. La versión/significado original de esta garantía en idioma Inglés controla todas las traducciones y Profile Design no se responsabilizará por cualquier error en traducción de esta garantía o cualquier instrucción del producto. Esta garantía no ofrece ningún derecho adicional legal, jurídico o derechos de garantía a usted otros que los establecidos aquí o requeridos por ley. Si alguna parte de esta garantía es considerada inválida o inexecutable por cualquier razón, tal resultado no invalidará cualquier otra cláusula. Para productos comprados en países que no sean los Estados Unidos, contacte el revendedor autorizado de Profile Design en ese país respectivo.

#### Opciones del Servicio de Garantía

Para obtener el servicio bajo esta garantía, usted debe:

- Traer o enviar su producto Profile Design, juntamente con esta garantía, el recibo original del revendedor detallista o otra prueba satisfactoria de la fecha de compra al revendedor detallista donde se compró el artículo o a un otro revendedor detallista autorizado por Profile Design, o
- Enviar su producto Profile Design (con el número de autorización de devolución en la parte externa del contenedor de embarque y pegado al producto), juntamente con el recibo original del revendedor detallista o otra prueba satisfactoria de la fecha de compra al Profile Design 2677 El Presidio St. Long Beach, CA 90810 USA. Se debe obtener primeramente un número de autorización para devolución llamando Profile Design (310) 884-7756 ext. 161 (o enviando un email para [warranty@profile-design.com](mailto:warranty@profile-design.com)) antes de devolver el producto al Profile Design.

Profile Design puede requerir que usted llene y firme un formulario de solicitud para reemplazo en garantía antes de procesar su demanda de garantía.

Todo franqueo, seguro o otros costos de embarque incurridos por el envío de su producto Profile Design para servicios bajo cualquier

opción ariba será de su responsabilidad. Profile Design no se responsabilizará por productos perdidos o dañados en el embarque.

Para productos comprados en países que no sean los Estados Unidos, contacte el distribuidor autorizado por Profile Design en el país donde el producto fue comprado. Ellos pueden ser encontrados en nuestro sitio de web en [www.profile-design.com](http://www.profile-design.com)

#### Política para Reemplazo por Accidente de Profile Design

Profile Design entiende que accidentes pueden ocurrir y reemplazo de piezas dañadas de bicicleta pueden ser costosas. Por eso Profile Design intentará aliviar el problema ofreciéndole un producto de reemplazo por 30% menos que el precio detallista actual sugerido por Profile Design en su país respectivo. Todas las otras cláusulas de esta garantía se aplican y los procedimientos descritos para el servicio de garantía se aplican también a la política de reemplazo por accidente. Profile Design hará la decisión final sobre la cobertura de pieza bajo la política de reemplazo por accidente.

#### Exclusiones de Garantía

Detallistas e revendedores de productos Profile Design no están autorizados a modificar esta garantía de ningún modo. Es su responsabilidad verificar a intervalos fijos el producto para determinar la necesidad de reparo normal o reemplazo. Esta garantía no cubre lo siguiente:

- Productos que han sido modificados, negligenciados o deficientemente mantenidos, utilizados para propósitos comerciales, utilizados incorrectamente, o abusados o implicados en accidentes.
- Daño ocurrido durante el embarque de los productos (tal reclamación debe ser presentada directamente a la compañía de transporte).
- Daño a productos resultante de ensamble incorrecto o reparo, la utilización o instalación de piezas o accesorios no compatibles con el uso original designado para el producto, o falla en seguir los avisos del producto y instrucciones de uso.
- Daño o deterioración al acabamiento de la superficie, estética o apariencia del producto.
- La mano de obra necesaria para quitar y/o reponer el artículo cubierto por esta garantía.
- Desgaste normal al producto.
- Cualquier producto en lo cual el consumidor no haya seguido los procedimientos de garantía mencionados arriba.

Para obtener la versión actual de esta garantía, visite nuestro sitio de web en [www.profile-design.com](http://www.profile-design.com)

(© Junio 2006 Profile Design)

[www.profile-design.com](http://www.profile-design.com)

[www.profile-design.com](http://www.profile-design.com)