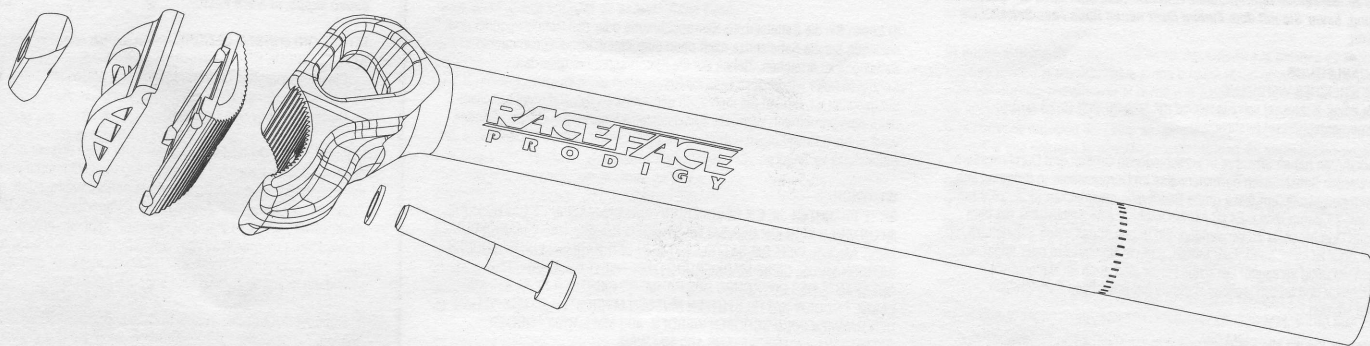


PRODIGY SEATPOST



Congratulations on the purchase of your new Race Face Prodigy Seatpost. Smart Move. Please save your original sales receipt. Read the Warranty section for complete information. Also, please read all the instructions before you begin to install your new Race Face seatpost.

INSTALLATION INSTRUCTIONS

TOOLS REQUIRED

- 6mm allen (hex) key, preferably with long (5"+) handle
- Torque wrench (optional)

Seat tubes on bicycle frames come in many sizes and diameters, and subsequently, seatposts are typically manufactured in diametrical increments of 0.20mm to match this wide range (i.e. 26.8mm, 27.0mm, 27.2mm, etc.). It is critical that the correct diameter of seatpost is used. An improper fit, whether too large or too small, can result in pre-mature failure of your seatpost or even your frame! Such actions are easily detectable and void any and all warranties on Race Face seatposts.

- 1) Remove the old seatpost from your frame and check the manufacturer's size marking to confirm that your new Race Face seatpost is the same diameter to that which you are replacing. If you are installing your Race Face post into a new frame, check with the frame manufacturer's specifications to confirm diameter required.
- 2) Clean any dirt, grease, etc. out of the top end of your seat tube, and inspect the inside surfaces for burrs, especially around the top edge and the slot which are notorious for sharp edges. Sharp burrs can gouge the surface of the aluminum seatpost tube during installation, potentially leading to pre-mature failure. Please pay attention to this as not following our instructions voids any and all warranties.
- 3) Remove all sharp edges and burrs with fine grit sand paper or emery cloth. If your seat tube is in particularly rough shape, we recommend taking your frame to a professional bike shop and have them ream or hone the inside diameter of the seat tube. This will ensure accurate fit and smooth surface.
- 4) Apply a generous film of grease to the inside of the frame's seat tube. This will facilitate smooth installation, and will also prevent corrosion and galling which can cause a seatpost to seize in the frame over time.

INSTALLATION

1) Slide seatpost into pre-greased seat tube. There should be a small amount of friction, but you should be able to easily push the seatpost straight in. DO NOT swivel the seatpost back and forth while pushing down! This can seriously damage the seatpost. If this type of force is required, it is usually an indication of a rough or under-sized seat tube surface. Repeat step #3 in frame preparation instructions.

2) Set the tube to approximately the height you require, and clamp-down the quick release lever or tighten the seat collar clamp bolt. Final height adjustment is later.

Note: The Race Face seatpost head assembly is pre-assembled at the factory. Disassembly is not required for saddle installation. See exploded view diagram for part descriptions.

3) Loosen the CLAMP BOLT with your 6mm allen key until only a few threads are engaged into the ROTATOR NUT. Rotate the UPPER RAIL CLAMP 180 degrees so that the saddle rail grooves on the LOWER RAIL CLAMP are exposed.

4) Place the saddle (rails) onto the LOWER RAIL CLAMP. While holding the saddle with one hand, lift the UPPER RAIL CLAMP up so it clears the saddle rails and then rotate it back 180 degrees so that the saddle rail grooves on the UPPER RAIL CLAMP now rest on top of the saddle rails.

5) Tighten CLAMP BOLT a few turns until saddle is held in place, but not tight.

6) Saddle tilt angle adjustment: Note that the LOWER RAIL CLAMP has indexing teeth on the bottom surface that mate with indexing teeth on the cradle surface of the SEATPOST HEAD. Each indexed step equals a 4 degree angular adjustment of your saddle tilt. Select the saddle tilt angle by moving the nose of the saddle up or down until the indexing teeth are engaged at your desired setting.

Note: Saddles are typically designed to be most comfortable when positioned with the nose and tail horizontal (i.e. parallel to the ground). While saddle positioning is obviously a very personal thing, this position is a good place to start.

7) Fore-Aft position adjustment: While holding the rail clamp assembly to maintain saddle tilt angle, slide saddle forward or rearward in the rail clamps to achieve desired position.

Note: As with saddle tilt angle, fore-aft adjustment is a personal thing and may require multiple adjustments before you achieve your ideal position for performance and comfort. If you are unsure, we recommend starting with the rail clamps positioned in the middle of the saddle rails. This is the most neutral position and will allow you both forward and rearward adjustment options as required.

8) When both saddle tilt angle and fore-aft position adjustment are achieved, tighten the clamp bolt with your 6mm allen key to 12-14 ft./lbs. torque (16-19 N.m) to lock-in the saddle position.

9) Release seat collar clamp bolt or quick release lever, and slide post up or down to achieve desired height. Re-tighten bolt or quick release. If your collar is a bolt-type, go by frame manufacturer's specifications for fixing torque. Over-tightening the collar clamp bolt can induce stresses that reduce the strength and service life of the seatpost.

IMPORTANT!!!

PLEASE NOTE THE MAXIMUM HEIGHT LINE MARKING NEAR THE BOTTOM END OF THE SEATPOST TUBE! THIS MARKS THE MINIMUM AMOUNT OF SEATPOST THAT MUST BE INSERTED INTO THE FRAME. THESE MARKINGS MUST BE HIDDEN BELOW THE TOP OF THE FRAME'S SEAT TUBE. THIS MINIMUM INSERTION REQUIREMENT IS 75MM FOR 330MM PRODIGY SEATPOSTS AND 100 MM FOR 400 MM PRODIGY SEATPOSTS.

INSUFFICIENT INSERTION CAN ALSO DAMAGE YOUR FRAME. MANY FRAME MANUFACTURERS REQUIRE A MINIMUM INSERTION THAT IS GREATER THAN 75MM. COMPARE YOUR FRAME MANUFACTURER'S SPEC. AND GO WITH WHICHEVER NUMBER IS GREATEST.

MAINTENANCE

1) Check CLAMP BOLT periodically to ensure that it is tight. If a "creaking" sound is noticed, this could be an indication that something is loose or something requires lubrication.

2) Lubrication: A thin film of grease is recommended in the

following areas to protect metal to metal contact surfaces, eliminate potential creaks and ease adjustments:

- CLAMP BOLT threads and under bolt head.
- Underside of ROTATOR NUT where it contacts the UPPER RAIL CLAMP.
- Saddle rail / Rail clamp interfaces, especially when using Titanium rail saddles.

3) Inspect seat post tube and head carefully after any crash. Small micro-cracks or slight bending that can result from a crash can lead to pre-mature sudden failure of a seatpost component. If anything is evident upon inspection, discontinue use and replace, or return the post to an authorized dealer for further inspection if you are uncertain.

Cutting Seatpost Tube Length:

Many modern rear suspension systems on Mountain bikes feature an interrupted seat tube design (e.g. Trek, Cannondale, Specialized, GT, Norco, Rocky Mountain, and many others. This frame design often dictates that the seatpost must be shortened to avoid interference between the rear tire and the bottom of the seatpost when the suspension is compressed.

The Race Face Prodigy seatpost has a constant wall thickness throughout its length and therefore it is an acceptable practice to cut its length down as required and clamp the seatpost anywhere along its length.

IMPORTANT: Although shortening the seatpost tube is acceptable and will not void the warranty, we still require a minimum insertion of 75mm into the bike frame at all times. While the minimum insertion markings on the lower section of the post may be removed when shortening the post, it is easy to distinguish the clamping location on any seatpost by the wear marks, or in the case of a bending failure, the location of the bend.

Warranty claims on shortened seatposts are accepted solely at the discretion of Race Face. Parts abused by inadequate insertion depth into the frame will not be covered under the warranty.

WARRANTY

1. Our Prodigy Seatpost carries a limited two-year warranty. Coverage begins on the user's date of original purchase.
2. This warranty is limited to the original purchaser. Proof of original purchase is required. This can take the form of a photocopy of the original sales receipt. Save your receipts!
3. This warranty covers defects in materials and workmanship.
4. Our warranty does not cover bending due to excessive loading or impacts to the product.
5. This warranty does not cover defects arising from misuse, abuse, accidents, alterations, lack of main preventative and routine maintenance, or failure to install according to the instructions and proper procedures.
6. Race Face recommends replacement of the seatpost after a crash involving impact on the seatpost.
7. Race Face warranties do not cover fading of anodized colors, nor will Race Face replace non-defective sub-component pieces because they do not exactly color match the replaced defective pieces. Colors vary from batch to batch and from year to year. We will however do our best to match colors with the replaced piece.