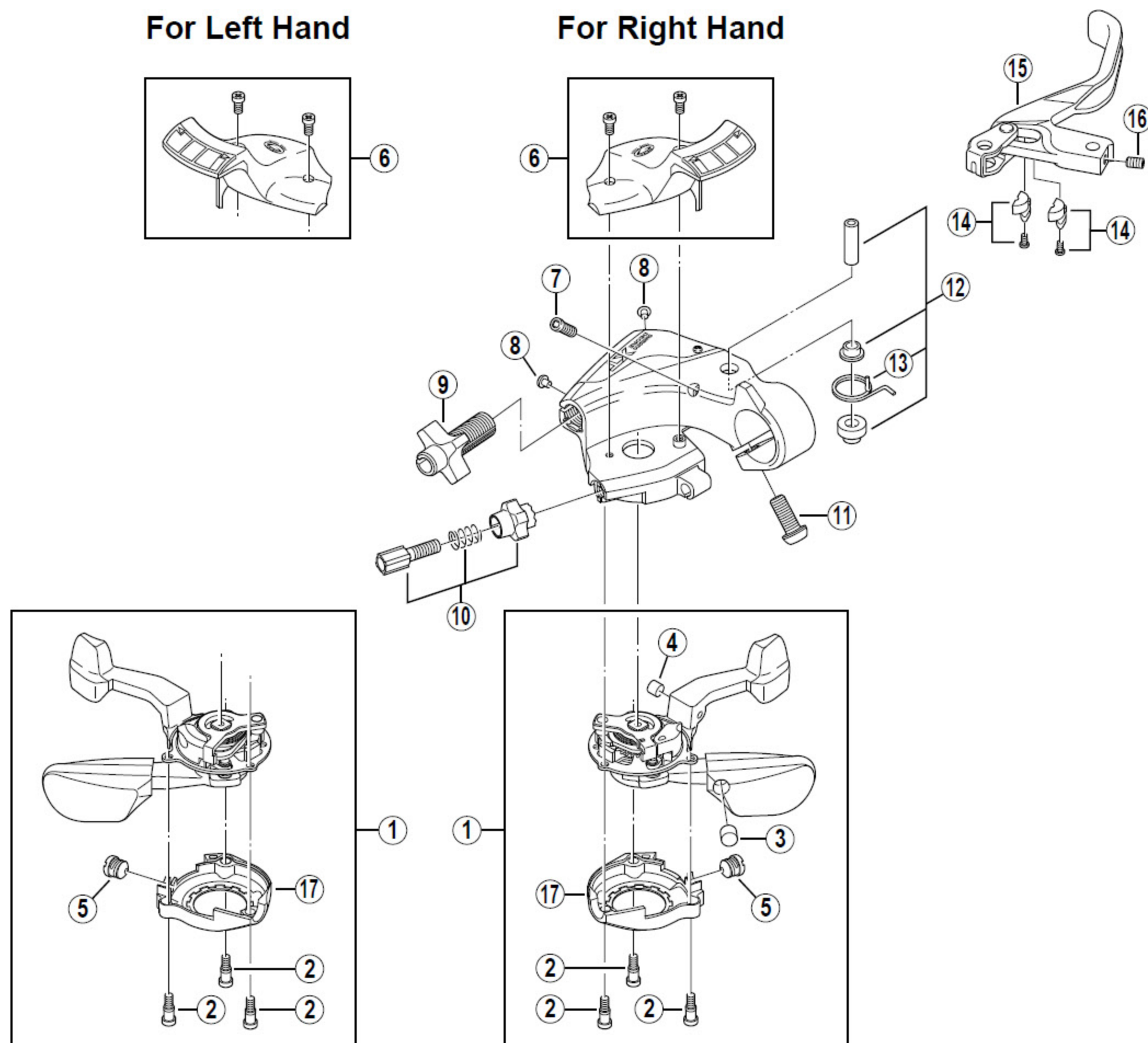


# DEORE XT Mega-9 Rapidfire Lever

## ST-M750 1.5-Finger



ITEM NO.	SHIMANO CODE NO.	DESCRIPTION
1	Y-6CE 98010	R.H. Shifting Lever Unit
	Y-6CE 98020	L.H. Shifting Lever Unit
2	Y-6CE 37000	Shifting Lever Unit Fixing Bolt
3	Y-6BV 50000	R.H. Main Lever Nipple Cap
4	Y-6BV 49000	R.H. Release Lever Nipple Cap
5	Y-6CD 33000	Inner Hole Cap
6	Y-6CH 98010	R.H. Indicator Unit
	Y-6CH 98020	L.H. Indicator Unit
7	Y-6AM 82010	Grip Adjusting Bolt (M4 x 10)
8	Y-6BV 48000	R.H. Base Hole Cap
9	Y-6CH 86000	Brake Cable Adjusting Bolt (M10 x 22)
10	Y-6CE 98070	Shifting Cable Adjusting Bolt Unit
11	Y-8SB 10000	Clamp Bolt (M6 x 14.8)
12	Y-6CH 98070	R.H. Lever Axle Unit
	Y-6CH 98080	L.H. Lever Axle Unit
13	Y-6CH 87000	R.H. Return Spring
	Y-6CH 87010	L.H. Return Spring
14	Y-872 98010	R.H. Adjustment Block & Screw
	Y-872 98020	L.H. Adjustment Block & Screw
15	Y-6CH 98050	R.H. Brake Lever Unit
	Y-6CH 98060	L.H. Brake Lever Unit
16	Y-6AU 84000	Lever Axle Fixing Bolt
17	Y-6CE 09000	R.H. Unit Cover
	Y-6CE 59000	L.H. Unit Cover

0205-1785B

Specifications are subject to change without notice.

# SHIMANO



© 2002 by Shimano Inc.