

SM-MA-F180P / P2

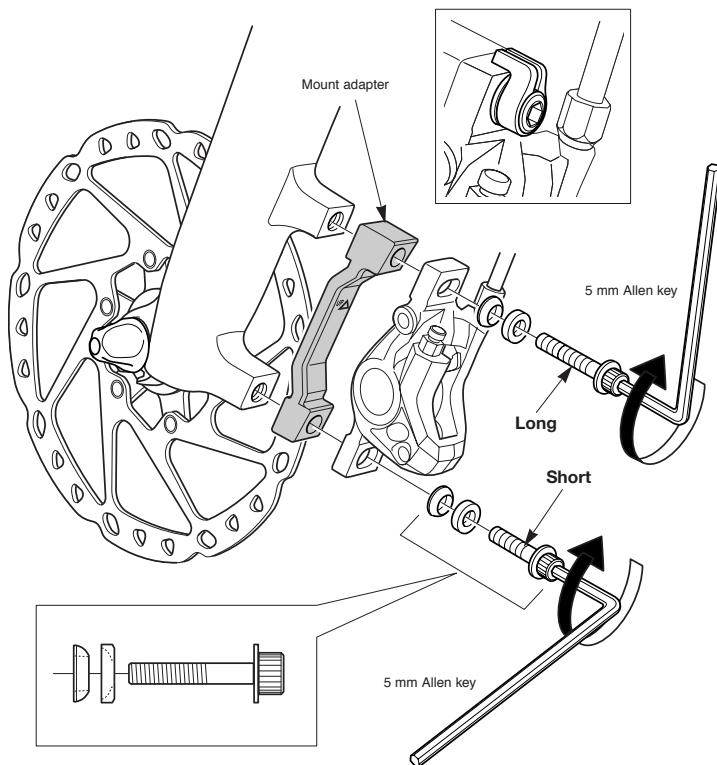


00

Disc brake mount adapter (for 180 mm rotor)

Place the adapter onto the caliper as shown in the illustration, and then install the adapter to the frame.

Tightening torque:
6 - 8 N·m {53 - 69 in. lbs.}



SHIMANO

SHIMANO AMERICAN CORPORATION

One Holland, Irvine, California 92618, U.S.A. Phone: +1-949-951-5003

SHIMANO EUROPE B.V.

Industrieweg 24, 8071 CT Nunspeet, The Netherlands Phone: +31-341-272222

SHIMANO INC.

3-77 Oimatsu-cho, Sakai-ku, Sakai-shi, Osaka 590-8577, Japan

Please note: specifications are subject to change for improvement without notice. (English) © Jan. 2009 by Shimano Inc. XBC IZM Printed in Malaysia.