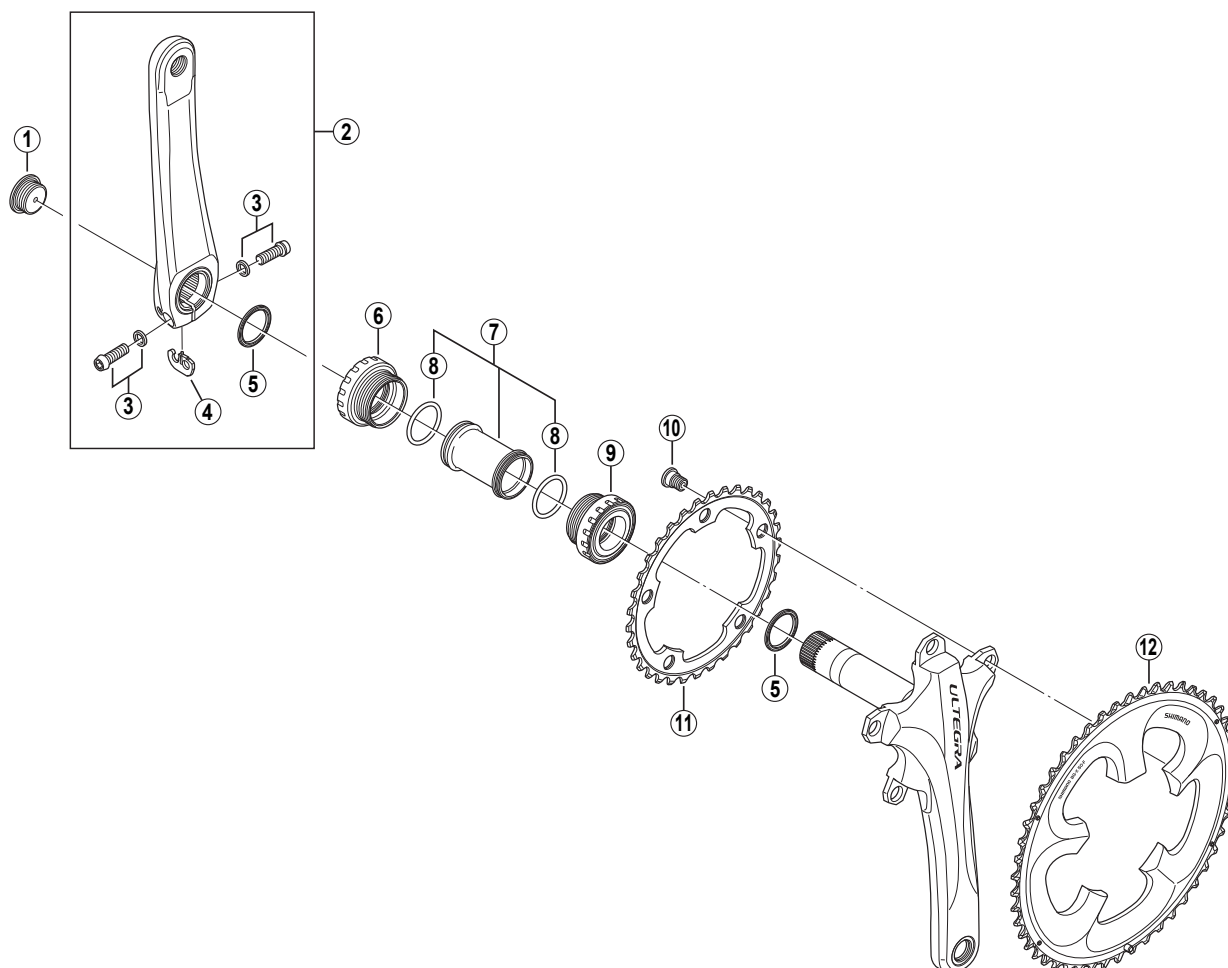


ULTEGRA Front Chainwheel FC-6750



• Bolt circle diameter: 110 mm

ITEM NO.	SHIMANO CODE NO.	DESCRIPTION	INTERCHANGEABILITY		
			FC-7900	FC-6700	FC-5650
1	Y-1KS 13000	Crank Arm Fixing Bolt	A		
2	Y-1LJ 98010	Left Hand Crank Arm 165 mm	A		
	Y-1LJ 98020	Left Hand Crank Arm 170 mm	A		
	Y-1LJ 98030	Left Hand Crank Arm 172.5 mm	A		
	Y-1LJ 98040	Left Hand Crank Arm 175 mm	A		
3	Y-1G3 98010	Clamp Bolt (M6 x 19) & Washer	A	A	
4	Y-1GE98050	Plate	A	A	A
5	Y-1F3 16000	Ring	A	A	A
6	Y-1LJ 98050	Left Hand Adapter (B.C.1.37" x 24T) English Thread	A		
	Y-1LJ 98060	Left Hand Adapter (M36 x 24T) Italian Thread	A		
7	Y-1G3 98150	Inner Cover & O-Ring	A	A	
8	Y-1TF 21000	O-Ring	A	A	A
9	Y-1LJ 98070	Right Hand Adapter (B.C.1.37" x 24T) English Thread	A		
	Y-1LJ 98080	Right Hand Adapter (M36 x 24T) Italian Thread	A		
10	Y-1KY98160	Gear Fixing Bolt (5 pcs.)	A	A	
11	Y-1LL 34000	Chainring 34T			
12	Y-1LL 98010	Chainring 50T-F			

A: Same parts.

B: Parts are usable, but differ in materials, appearance, finish, size, etc.

Absence of mark indicates non-interchangeability.

May-2009-2956

© Shimano Inc.

Specifications are subject to change without notice.

SHIMANO