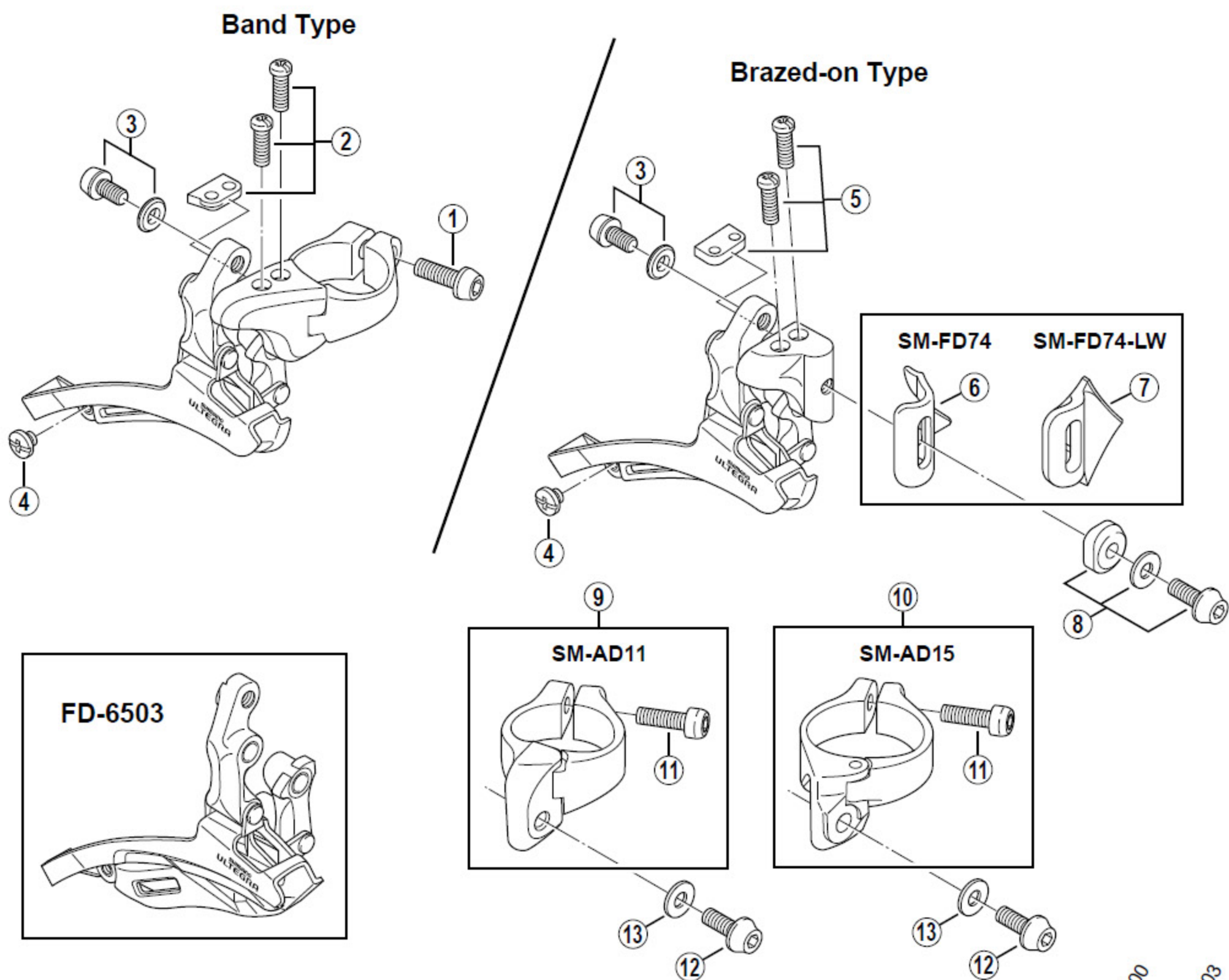


SHIMANO ULTEGRA Front Derailleur

FD-6500 For Double Gear

FD-6503 For Triple Gear



ITEM NO.	SHIMANO CODE NO.	DESCRIPTION	INTERCHANGEABILITY	
			FD-5500	FD-5503
1	Y-5A4 07020	Clamp Bolt (M5 x 15)	A	A
2	Y-58G 98010	Stroke Adjust Screws (M4 x 13) & Plate	A	
3	Y-58G 98020	Cable Fixing Plate & Bolt (M5 x 9)		
4	Y-58G 14000	Chain Guide Fixing Screw (M4 x 3)	A	A
5	Y-58G 98030	Stroke Adjust Screws (M4 x 13) & Plate for Brazed-on Type		A
6	Y-580 32000	SM-FD74 Brazed-on Bracket	A	A
7	Y-580 32100	SM-FD74-LW Brazed-on Bracket (Investment Cast)	A	A
8	Y-5EV 98020	Clamp Bolt Unit (M5 x 13.5) for Brazed-on Type	A	A
9	Y-57Y 92100	SM-AD11 Clamp Band Unit ϕ 31.8 mm (1-1/4") for Brazed-on Type	A	A
10	Y-57Y 91100	SM-AD15 Clamp Band Unit ϕ 34.9 mm (1-3/8") for Brazed-on Type	A	
11	Y-59L 19100	Clamp Bolt (M5 x 17.5) for SM-AD11/AD15	A	A
12	Y-5C2 52000	Clamp Bolt (M5 x 13.5) for SM-AD11/AD15	A	A
13	Y-59D 53000	Clamp Spacer	A	A

The table indicates the adaptability of conventional parts to FD-6500 / 6503.

A : Same parts.

Absence of mark indicates non-interchangeability.

9911-1700A

Specifications are subject to change without notice.

SHIMANO